

NBP-150

Smart and Stable POS System

To satisfy service demands, retail and hospitality

industry require high-performance POS systems

with flexible mount installation options

to suit diverse application environments.

Modularized and removable design allows you to customize

your high-end POS system based on your need. Single

screen, dual screen and VFD display, etc.

We provide whatever you want.





Metal body, aluminum material, good for heating with strong anti-interference ability.



Easy to change customer display or 2nd screen without screwdriver.



Easy to install MSR, lbutton.



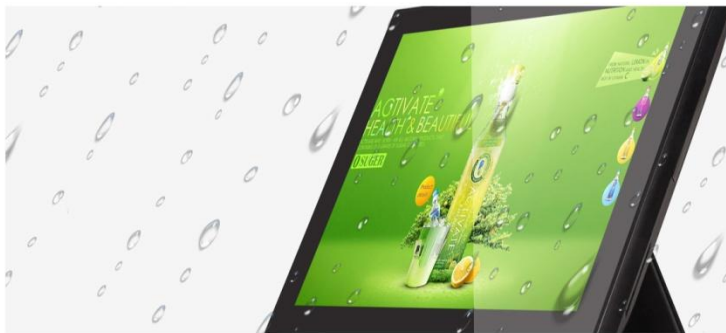
Easy to replace 2.5" hard disk without opening the whole machine.



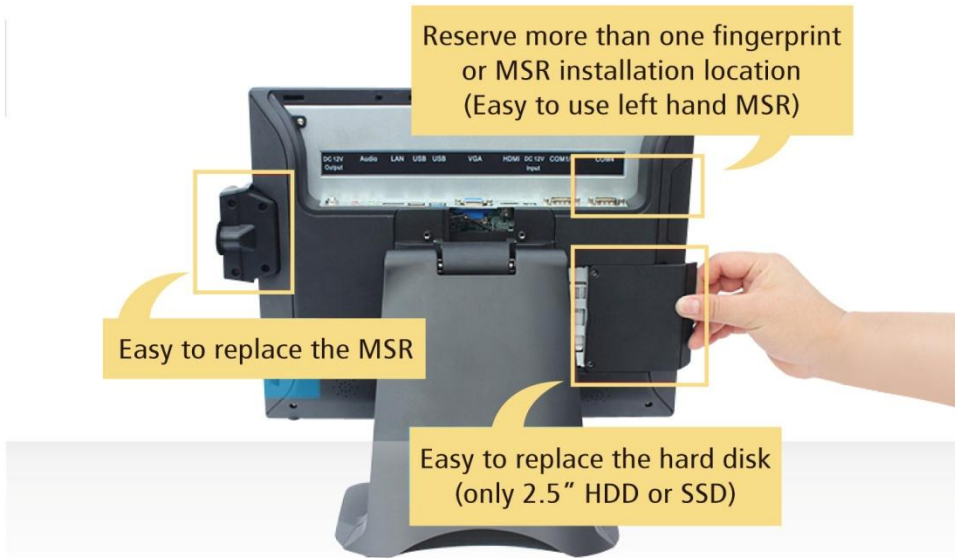
Light body, save rooms



Stand back cover can hide the wire



High standard of waterproof and dustproof (IP54)



Retail



Every retail store needs to leverage outstanding experiences at touch-point to win customer loyalty.

Take advantage of the opportunity to big customers at POS system with SEWOO products. The latest POS system for its superior configurability, Scalability, and power.

Touch screen all-in-one machine greatly improves the grade level of the restaurant,

it can be said to be synonymus with the image of identitynd forecast



Specification

Rotate 180°

2*20 VFD or LCD customer monitor

MSR and RFID or I-Button

2*USB Port



| CPU | |
|-------------------|--|
| Intel J1900 | Intel® Celeron® J1900, Quad Core, 2M Cache, 2.0Ghz |
| Intel i3 | Intel® Core® i3-3217U , Dual Core, 3M Cache, 1.8Ghz |
| Intel i5 | Intel® Core® i5-3337U , Dual Core, 3M Cache, 1.8Ghz |
| OS | |
| Supporting System | POSReady 7, Windows 10 IoT Enterprise |
| Main | |
| Memory | DDR3 4GB (up to 8GB) |
| Storage | 2.5" SATA 500G HDD or 64G / 128G SSD |
| Primary Display | |
| LCD | 15" TFT LED |
| Resolution | 1024 x 768 |
| Customer Display | VFD 220 Customer Display / LCD 2 line x 20 characters LED Display characters: Single line display Support 8 number only |
| Touch Screen | 15" Bezel-Free True-Flat Protective Capacitive Touch Screen |
| Secondary Display | 12.1" LCD, 15" LCD |
| Interface | |
| Intel J1900 | VGA (1), RS232 (2), RJ45 (1), USB (6), RJ11 (1) |
| Intel i3 / i5 | VGA (1), HDMI (1) RS232 (2), RJ45 (1), USB (6) |
| Audio | 1 * Mic-in, 1 * Line-out |
| Power | |
| DC-IN | Input AC 100~240V / 50~60hz, Output DC 12V / 5A |
| Environment | |
| Temperature | Operating 0~40°, Storage -20°~60° |
| Dimension | 420mm x 270mm x 400mm |
| Size | |
| Weight | 7kg |
| Optional | |
| MSR | ISO 1, 2, 3 Tracks |
| iButton | Dallas Key RS232 I/F |
| Finger Reader | |
| Reliability | |
| Certifications | CE, RoHS |

※ Specifications are subject to change without prior notice



MOBILE PRINTER



POS PRINTER



LABEL PRINTER



SMART DEVICE

J.STEPHEN Co., Ltd.

<http://www.miniprinter.com>

28-6, Gajangsaneopdong-ro, Osan-si, Gyeonggi-do, 18103, Republic of Korea
TEL : +82-31-8077-5000 / FAX : +82-31-459-8880